

Sonata sesta, Fuga harmonica à4

Adriano Banchieri
(1568 - 1634)

C
A
T
B

Measures 1-6 of the fugue. The Soprano (C) part begins with a half note G4, followed by a quarter note A4, and then a series of eighth notes. The Alto (A) part enters in measure 2 with a half note F#4. The Tenor (T) part enters in measure 3 with a half note E4. The Bass (B) part enters in measure 4 with a half note D4. The key signature has one flat (Bb) and the time signature is 4/4.

7

Measures 7-11. The Soprano (C) part continues with eighth notes. The Alto (A) part has a half note G4 in measure 7, followed by eighth notes. The Tenor (T) part has a half note F#4 in measure 7, followed by eighth notes. The Bass (B) part has a half note E4 in measure 7, followed by eighth notes. The key signature has one flat (Bb) and the time signature is 4/4.

12

Measures 12-16. The Soprano (C) part has a half note G4 in measure 12, followed by eighth notes. The Alto (A) part has a half note F#4 in measure 12, followed by eighth notes. The Tenor (T) part has a half note E4 in measure 12, followed by eighth notes. The Bass (B) part has a half note D4 in measure 12, followed by eighth notes. The key signature has one flat (Bb) and the time signature is 4/4.

17

Measures 17-21. The Soprano (C) part has a half note G4 in measure 17, followed by eighth notes. The Alto (A) part has a half note F#4 in measure 17, followed by eighth notes. The Tenor (T) part has a half note E4 in measure 17, followed by eighth notes. The Bass (B) part has a half note D4 in measure 17, followed by eighth notes. The key signature has one flat (Bb) and the time signature is 4/4.

Sonata sesta, Fuga harmonica à4

3

6

11

14

16

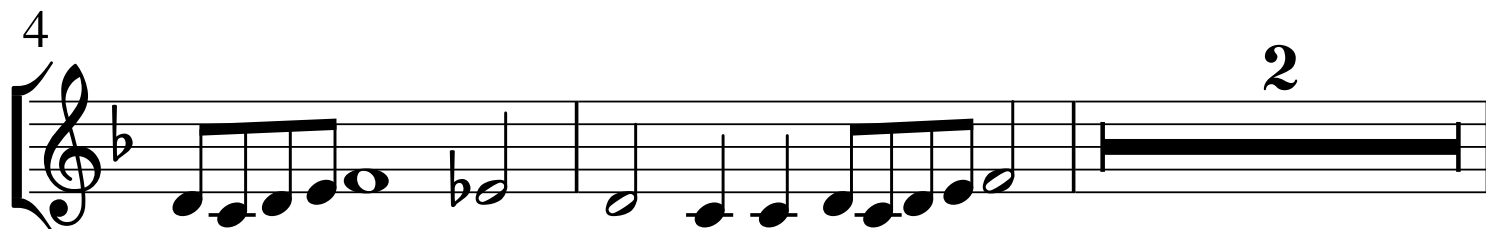
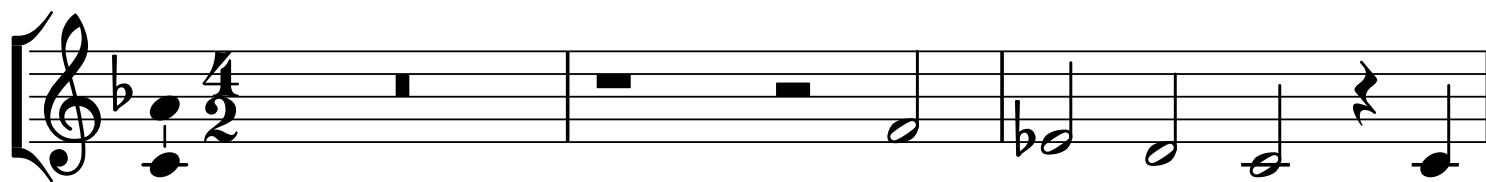
18

20

Alto

Adriano Banchieri
(1568 - 1634)

Sonata sesta, Fuga harmonica à4



Tenor

Adriano Banchieri
(1568 - 1634)

Sonata sesta, Fuga harmonica à4
3

8

6

8

11

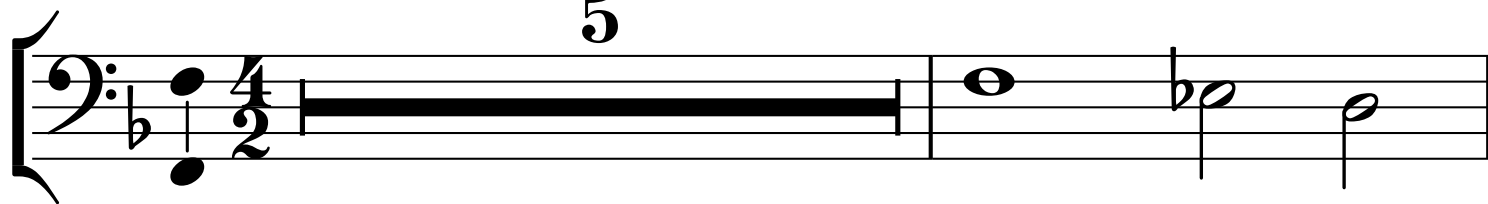
15

18

20

Sonata sesta, Fuga harmonica à4

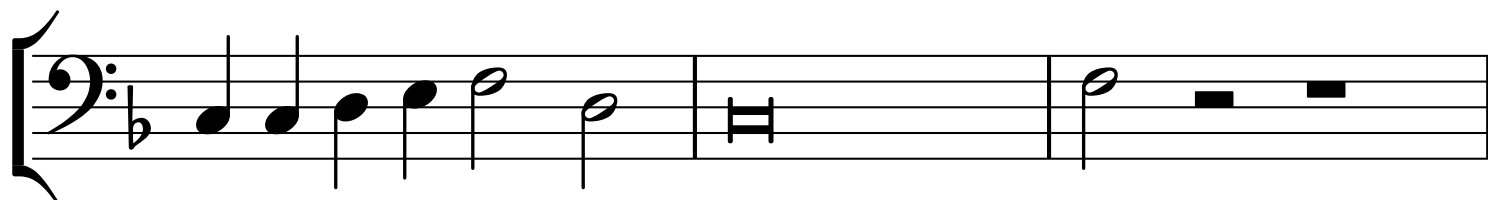
5



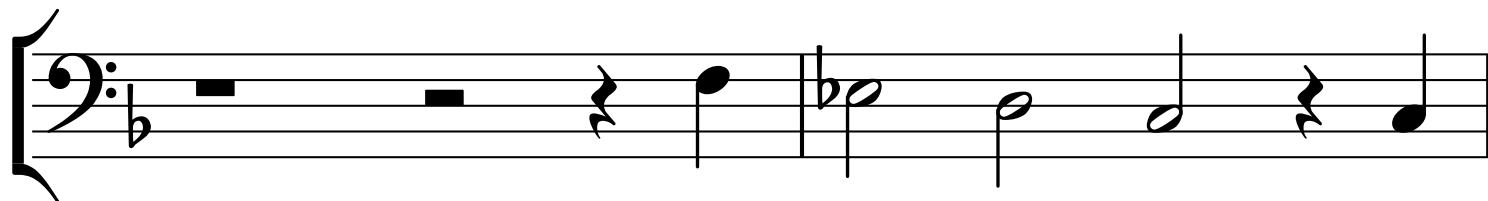
7



9

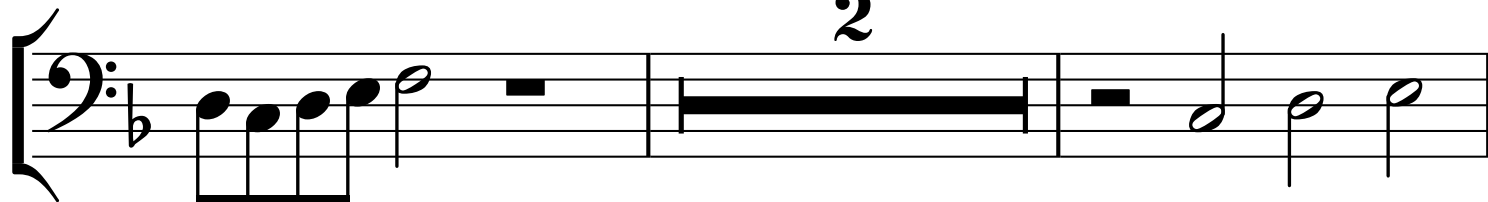


12



14

2



18

